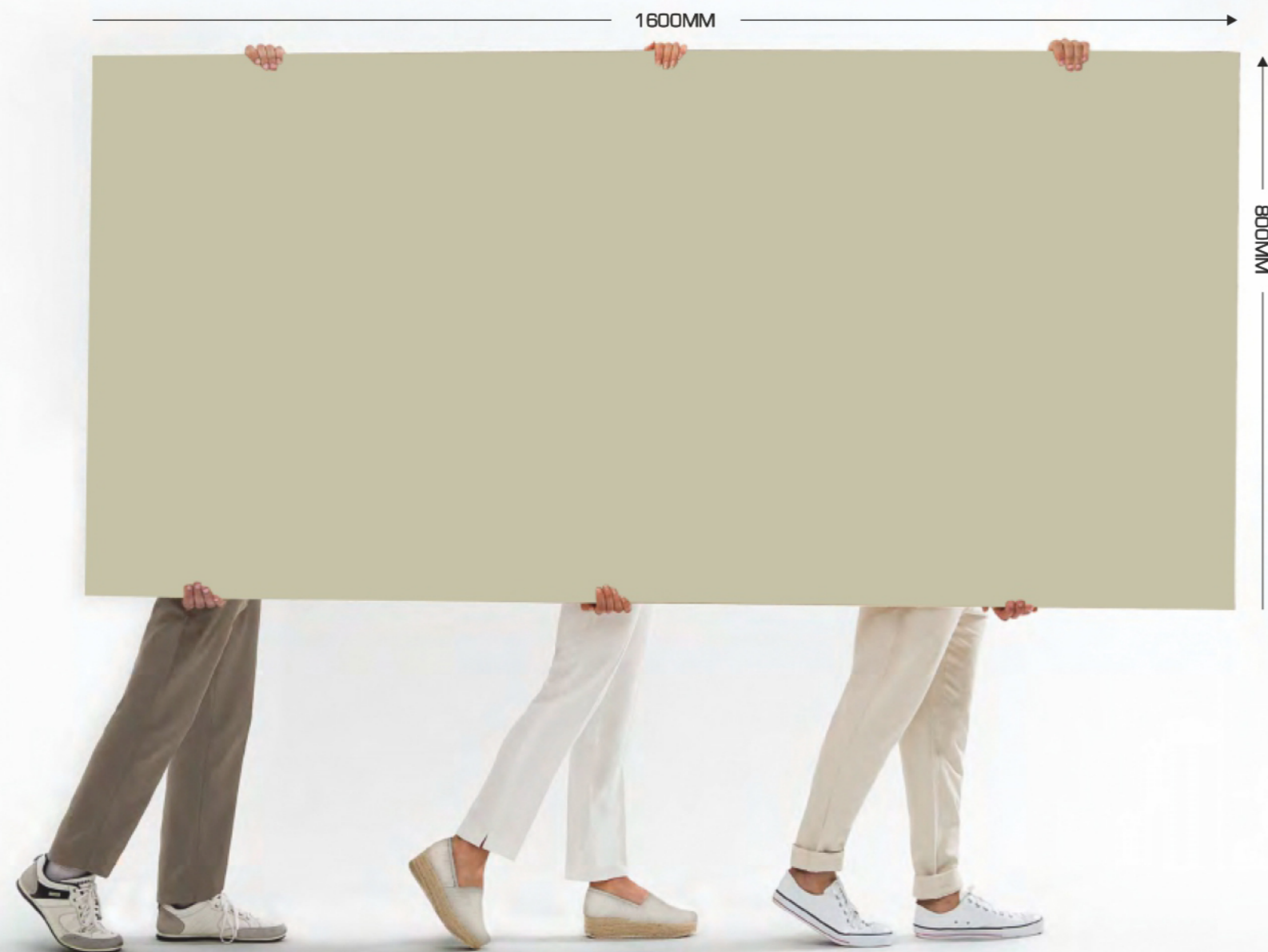


**PAVAGADHI**  
CERAMIC

**FULLBODY**  
COLLECTION

**800X**  
**1600MM**



## VERSATILITY IN SIZE

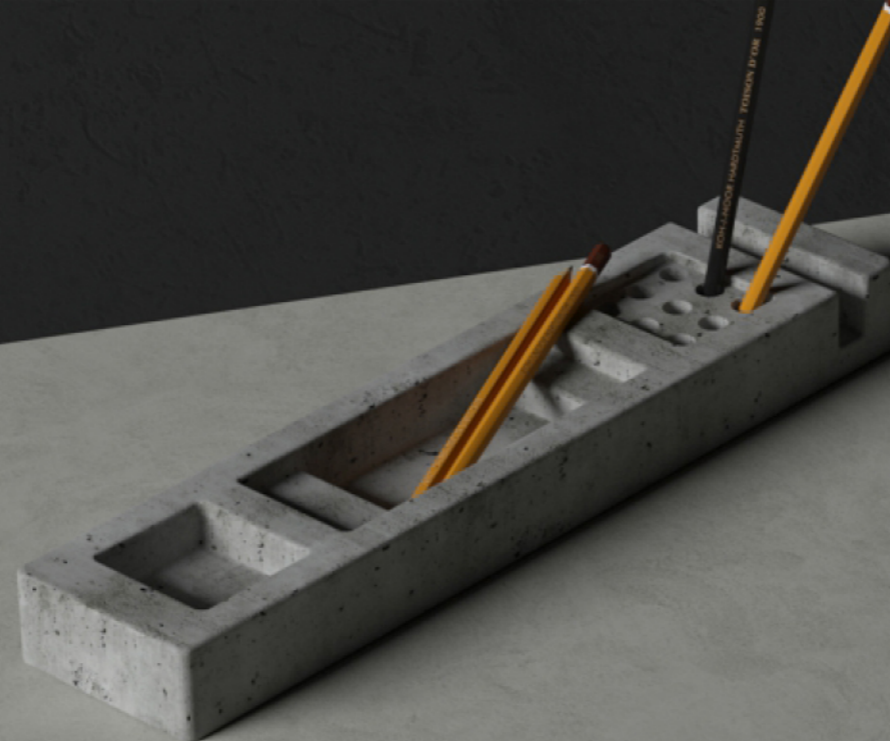
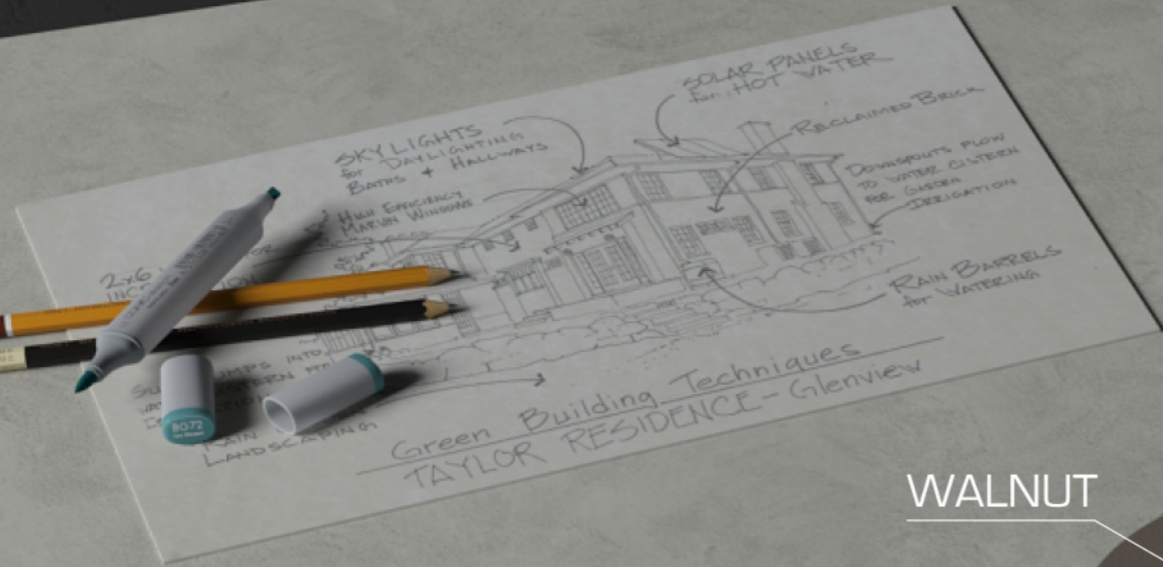
Explore the versatile size of tiles that we manufacture for every need and space. Our standard tile size impacts the overall appearance, so choose your size as per the look that you desire.

Our ideal range of this luxurious full body tiles integrates technological expertise with exquisite designs. Each tile is crafted using state of the art technology to ensure superior quality.

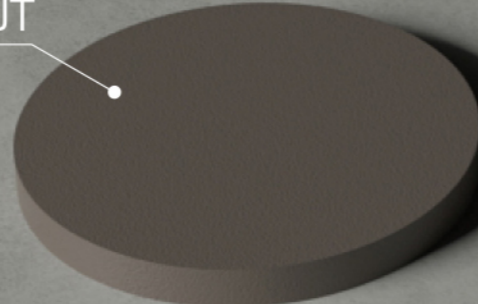
These premium surfaces come in a variety of unique designs which makes them a unparalleled masterpiece, always. With the appealing shades & features each tile is a masterpiece on its own. Apart from having aesthetic look.

# COLLECTING SHADES OF NATURE

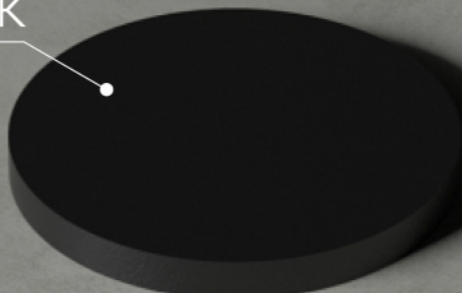
Shades of serenity that lasts the generations, Subtle-Soothing-Sublime shades that makes you stand out. Shades of surfaces plays a crucial role when it comes to build of space of granduer.



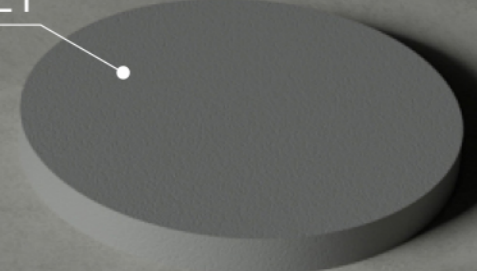
WALNUT



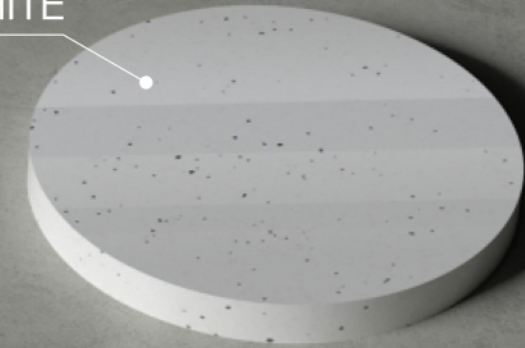
BLACK



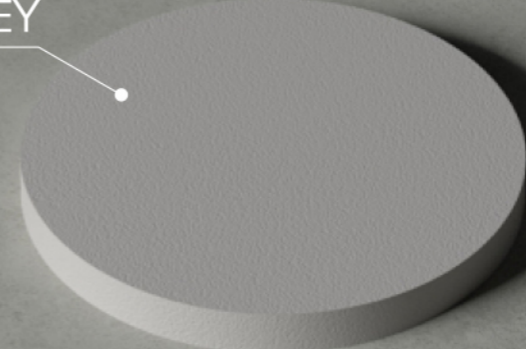
DARK GREY



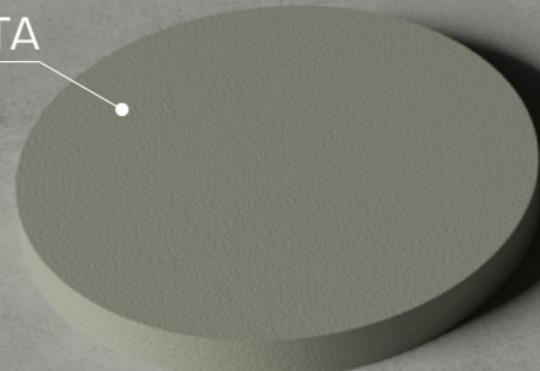
GALAXY WHITE



LIGHT GREY



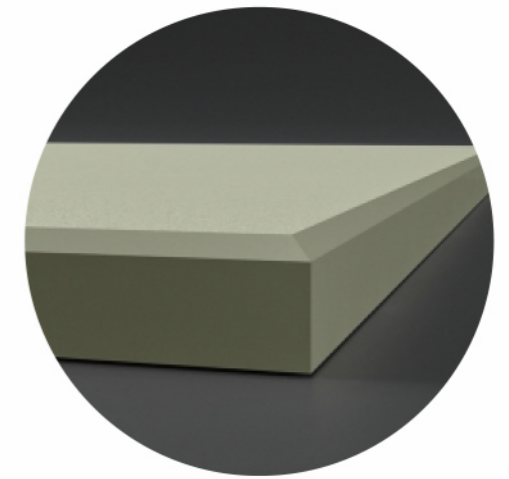
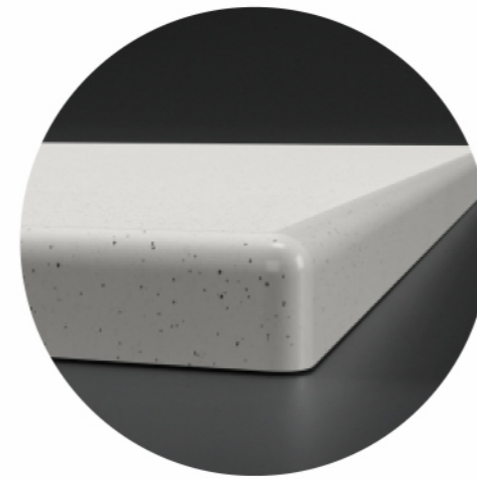
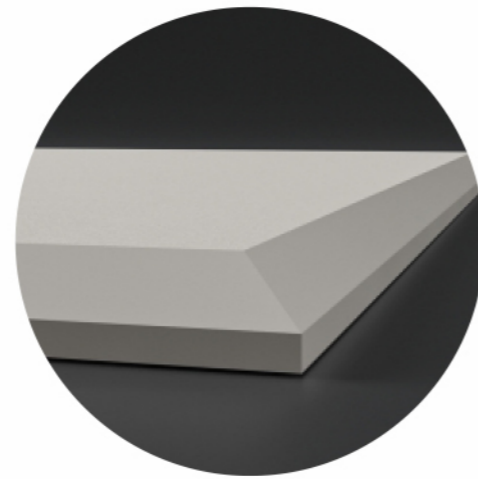
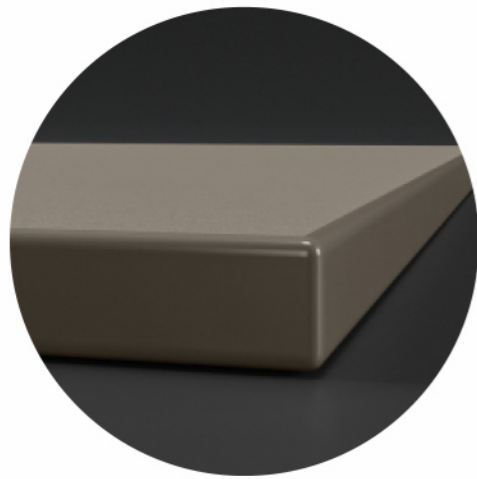
COTTA



## EDGE PROFILES

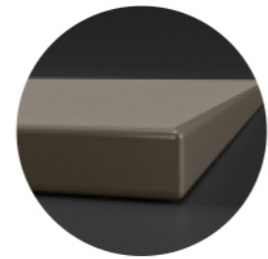
Fullbody 800x1600mm designs are available in matt finishes and different types of edge profiles to expand your design options. Offering unmatched durability with no maintenance, easy-care convenience, and superior stain resistance, we are back with our surfaces with a transferable Full Lifetime Warranty to ensure years of flawless service.

This design has been beautifully crafted with particular attention paid to different types of edges which help to not only understand the design pattern of different areas but also satisfy the requirements of the perfect fitting.

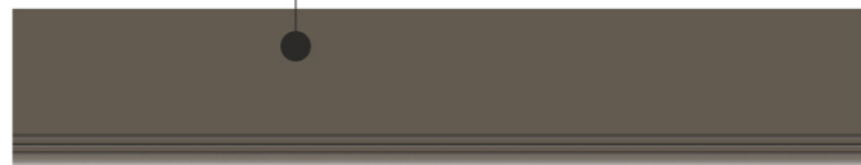


WALNUT  
AVAILABLE FINISH : MATT

9MM

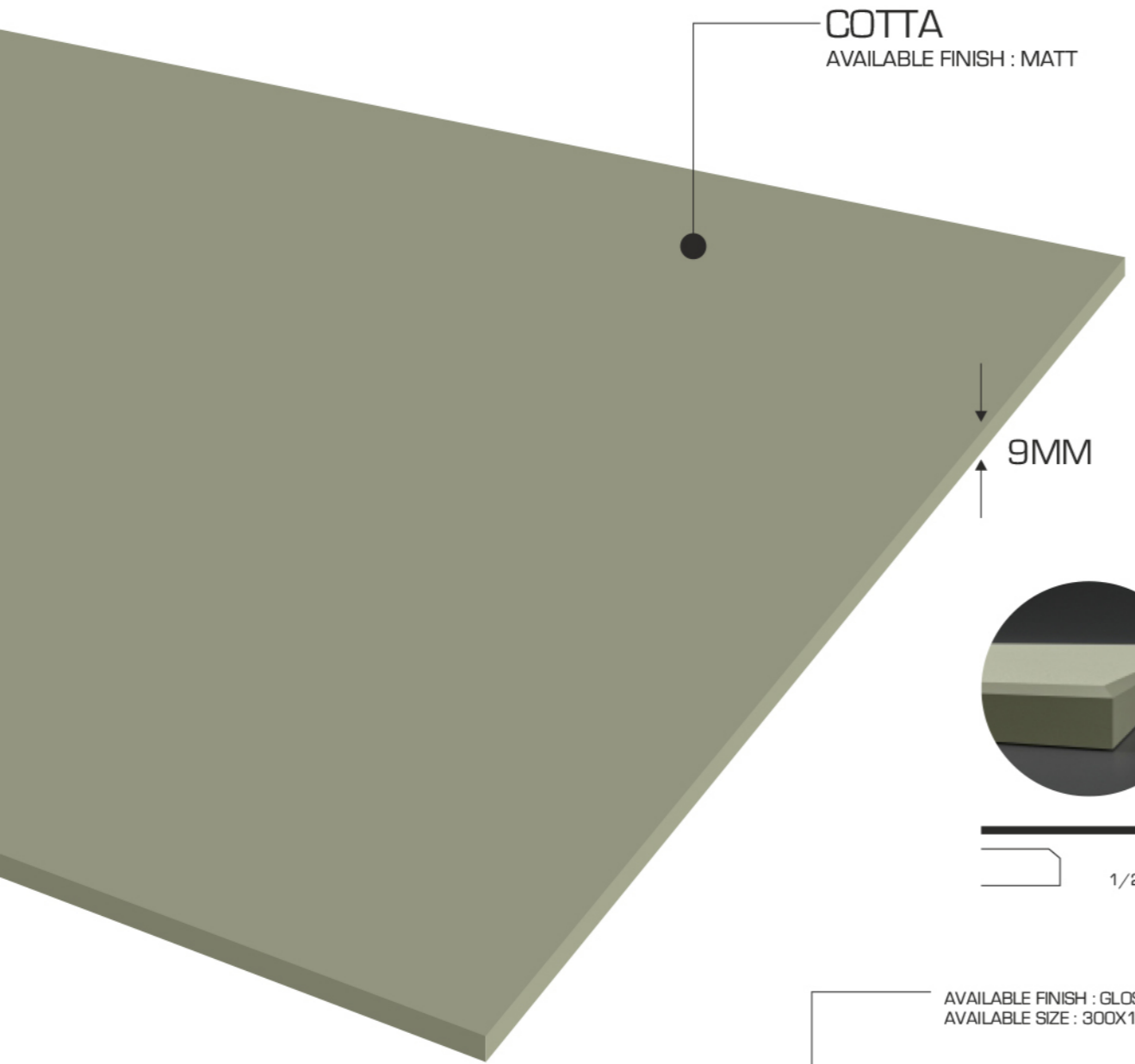


AVAILABLE FINISH : GLOSSY  
AVAILABLE SIZE : 300X1600MM



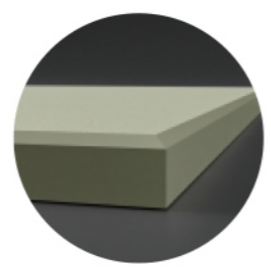


**PAVAGADHI**  
CERAMIC

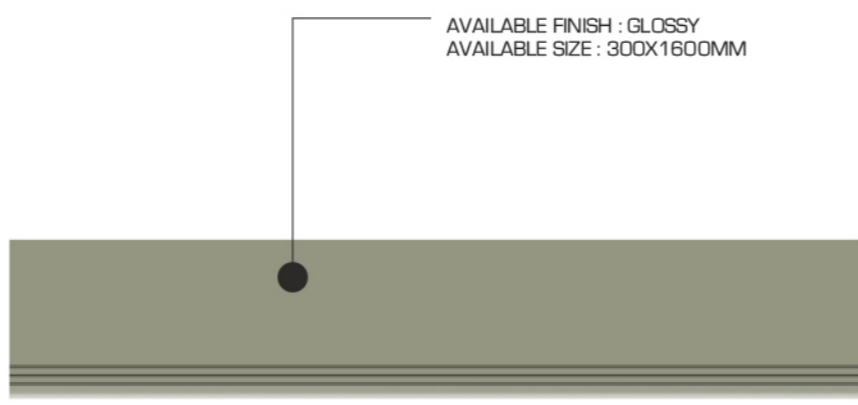


COTTA  
AVAILABLE FINISH : MATT

9MM



1/2" BEVEL



AVAILABLE FINISH : GLOSSY  
AVAILABLE SIZE : 300X1600MM

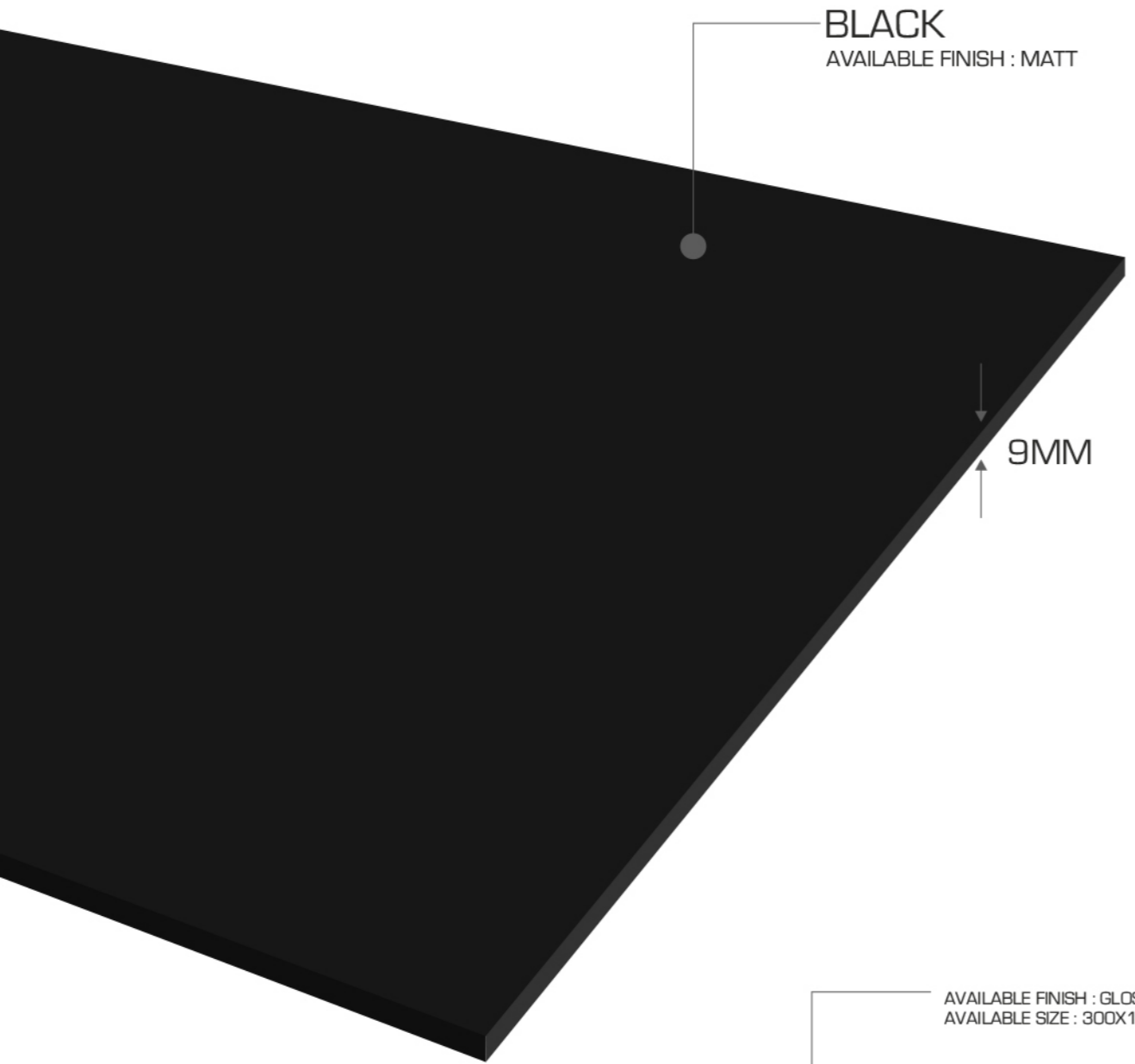


**PAVAGADHI**  
CERAMIC



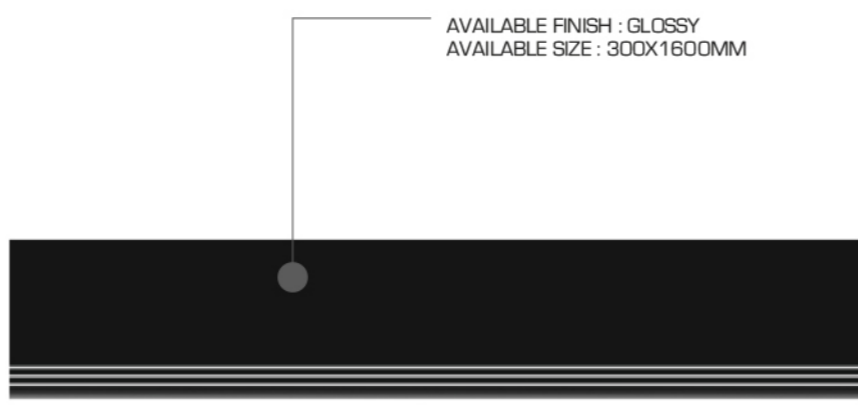
**PAVAGADHI**  
CERAMIC





BLACK  
AVAILABLE FINISH : MATT

9MM



AVAILABLE FINISH : GLOSSY  
AVAILABLE SIZE : 300X1600MM

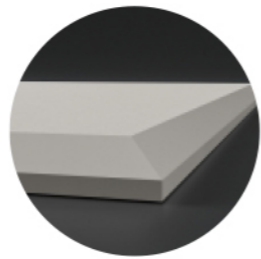


**PAVAGADHI**  
CERAMIC



LIGHT GREY  
AVAILABLE FINISH : MATT

9MM



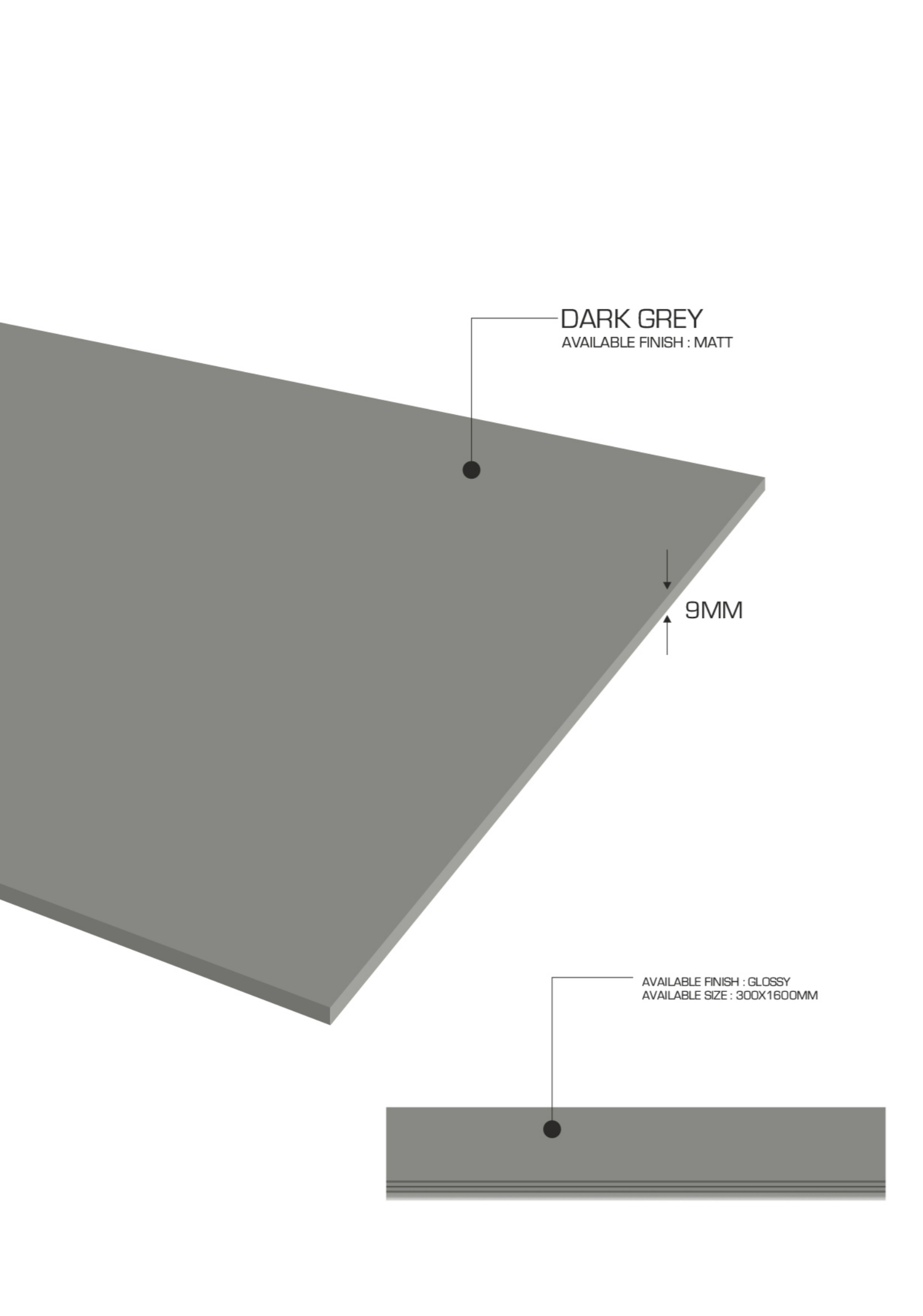
AVAILABLE FINISH : GLOSSY  
AVAILABLE SIZE : 300X1600MM



**PAVAGADHI**  
CERAMIC



**PAVAGADHI**  
CERAMIC



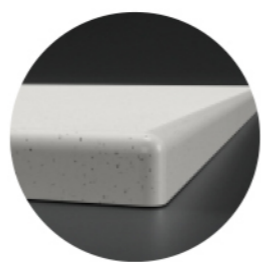
**PAVAGADHI**  
CERAMIC



**PAVAGADHI**  
CERAMIC

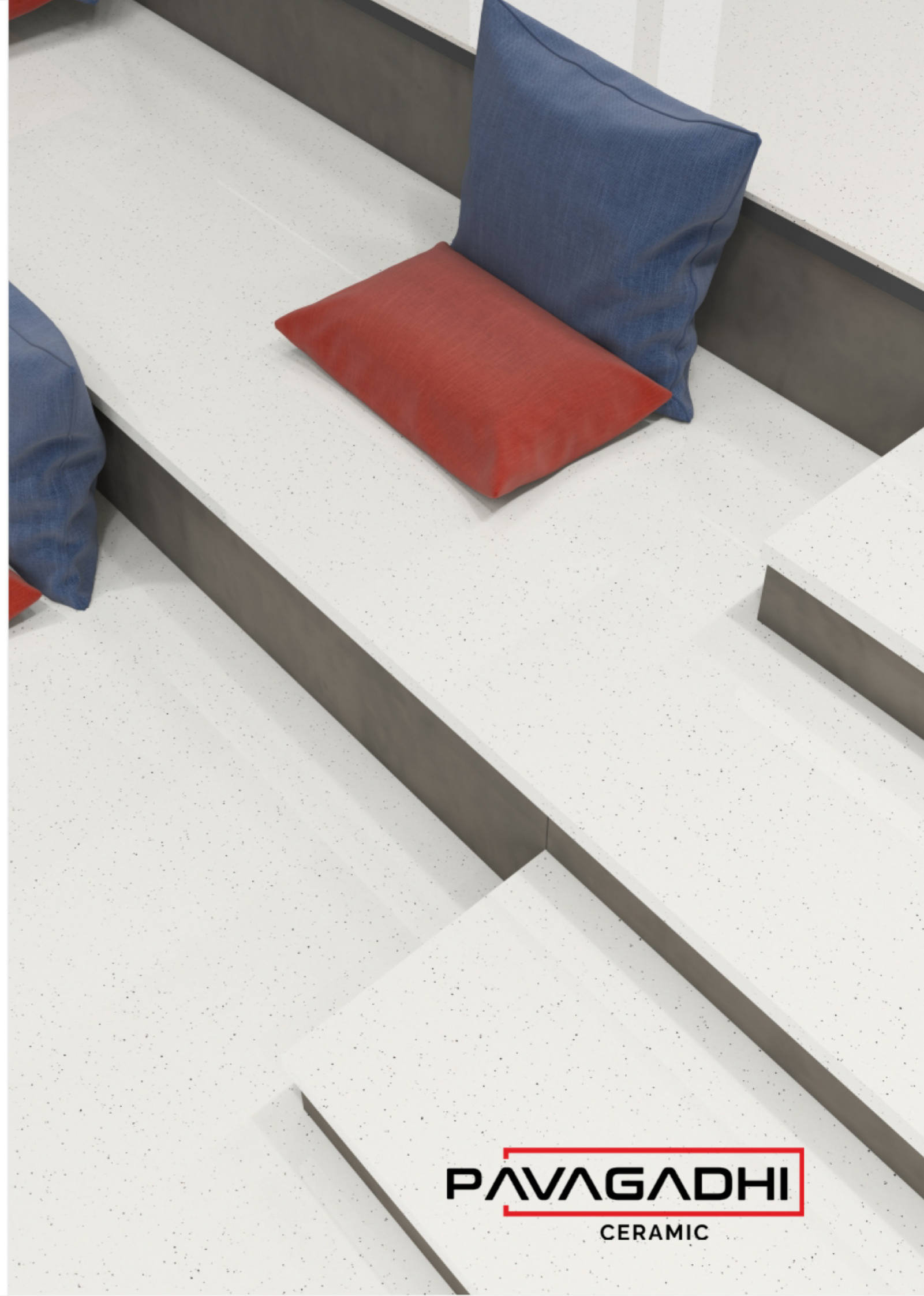
GALAXY WHITE  
AVAILABLE FINISH : GLOSSY

9MM



HALF  
BULLNOSE

AVAILABLE FINISH : GLOSSY  
AVAILABLE SIZE : 300X1600MM



**PAVAGADHI**  
CERAMIC



**PAVAGADHI**  
CERAMIC



## APPLICATIONS

Leading towards the enhancement of our lives, we apt to do the impossible. Same goes round here as well. Utilizing the state of the art technology, we are here to mesmerize you with surfaces which are applicable in many various spaces. These high end surfaces can be applied on the spaces which appreciates durability & endurance.



RESIDENTIAL



RESTAURANT



GARDEN & POOL



SHOPS



HOTELS



MALLS



OFFICE



PUBLIC SPACES



TRAIN STATION



AIRPORTS

## FEATURES



**STRONG** : Strength is the inherent feature of our indeed creation. We strive to deliver a melange of strength, craftsmanship, and size delivering function benefits as per the requirement of ambience



**LIGHT** : Subtleness with strong identity yet light in weight. Create interiors that interact with the architectural space with a refined look



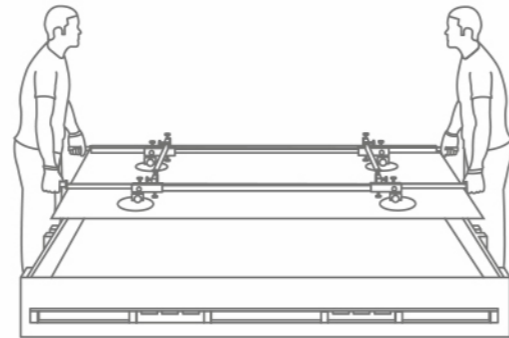
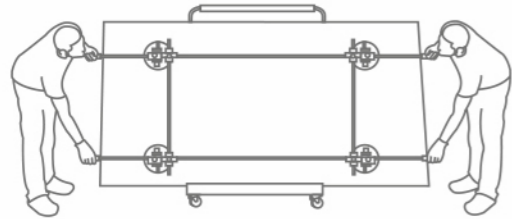
**SELF LEVELLING** : This next level feature create a smooth and even surface which makes it the most convenient among all.



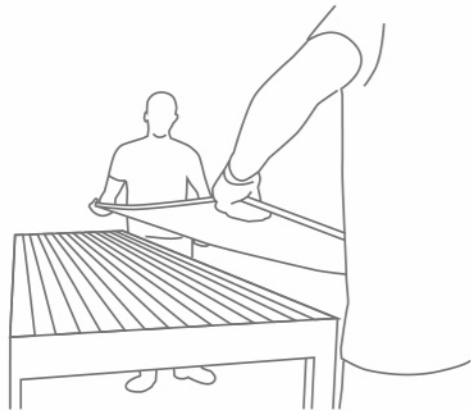
**GREEN** : At Our Company, we are committed to the environment and recognize that sustainability is an significant and and crucial part of our journey, we make it happen by producing trendsetting tiles in a zero-waste manufacturing process.

## MANUALLY TRANSPORTING IMMEDIATE

### MOVING A IMMEDIATE TILE



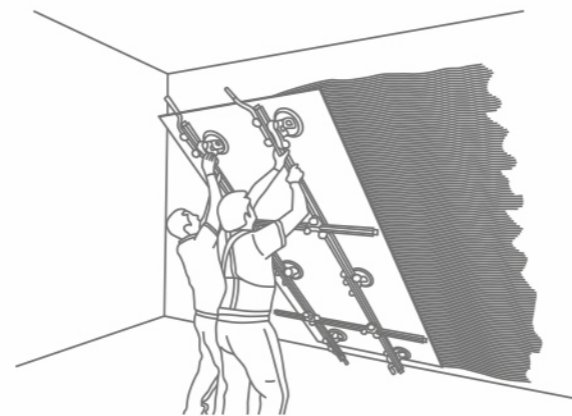
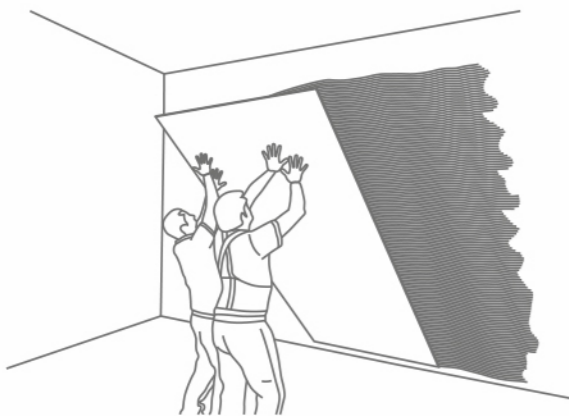
### RAISING A IMMEDIATE TILE ONTO A BENCH



✗ INCORRECT

✓ CORRECT

### HANDLING IMMEDIATE TILE FOR WALL

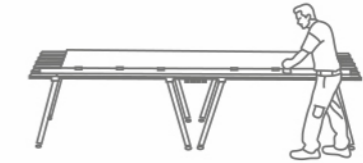


✗ INCORRECT

✓ CORRECT

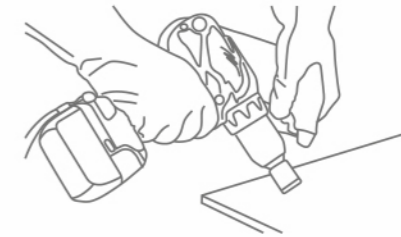
## WORKING WITH THE VARIOUS VERSIONS OF IMMEDIATE

### CUTTING WITH DIAMOND DISCS



Our products can be cut using diamond discs fitted onto the hand-held electrical grinding machine. The speed of Disc rotation must be high (>10000 RPM) and should have a low feed rate (< 1 m/min). It may be required to cool the disc with water. Recommended discs are the thin types generally used for cutting porcelain stoneware. The surface should be kept on a FLAT base while cutting without any gap underneath

### DRILLING



You can use cutting discs fitted to battery-operated screwdrivers or angle grinders, electrical drills as an alternative.

### INTERNAL CUT / L-SHAPED CUT

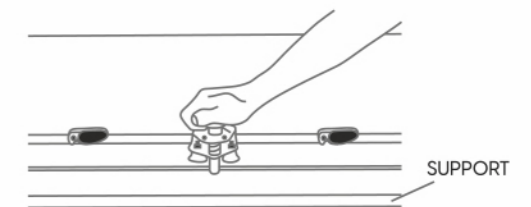
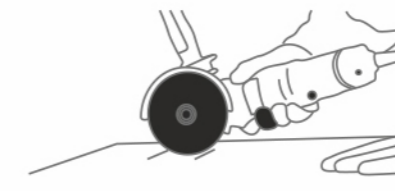


To get internal and L-shaped corners & to reduce the risk of breakage, round off the vertex of the internal corner using bits with a radius of at least 5mm. Then cut with diamond discs, be cautious to stop moving the cutting tool forward. To drill and cut using diamond discs, follow the instructions provided above.

When using these tools:

- Cool the point being drilled with water
- Don't put too much pressure and bear in mind the resistance of the type of laminated stoneware you are working on
- If you are using tungsten bits, start drilling at a low speed
- If you are using drills or screwdrivers, do not select hammering mode

### EDGE-FINISHING



## CLEANING & MAINTENCE

Our products are non porous (due to their high quality raw materials, stringent production parameters and state of the art technology), hence any dust or deposited waste cannot penetrate the surface.

For most cases only a damp cloth is sufficient for cleaning.

Regular cleaning highlights the aesthetic features of the surface and gives it exceptional shine.

For highly aggressive cleaning caused by some common food and substances follow the table below.

TYPE OF STAIN	CHEMICAL PRODUCT	EXAMPLE
Grease	Alkaline - Solvent	Detergent
Oil	Solvent	Ammonia, Backing Soda
Ink	Oxidant - Solvent	Alcohol, Liquid Bleach, Nail Paint Remover
Rust	Acid	Hydrochloric Acid, Vinegar, Red Harpic
Lime	Acid	Descaling Reagent, Hydro Chloric Acid
Cement	Acid	Hydro Chloric Acid
Wine	Alkaline	Ammonia, Liquid Bleach
Coffee	Alkaline - Solvent	Ammonia, Liquid Bleach
Rubber	Solvent	Alcohol, Thinner
Plaster	Acid	Hydro Chloric Acid
Candle Wax	Solvent	Alcohol, Thinner
Iodine	Oxidant	Liquid Bleach
Blood	Oxidant	Liquid Bleach
Ice Cream	Alkaline	Liquid Bleach

Note: It is recommended that any kind of stain needs to get clean immediately / as soon as possible.

## PACKING DEATILS

DIMENSION (mm)	SLAB	SQ. METER	SQ. FEET	WEIGHT (APPROX)
800x1600	2	2.56	27.55	52 Kgs.

## TECHNICAL SPECIFICATION

CHARACTERISTIC	STANDARD AS PER ISO-13006/2018 En14411 gr.bla	VALUE	TEST METHOD
<b>Regulatory Properties</b>			
Deviation in Length & Width	±0.5%	±0.2%	ISO 10545-2
Deviation in Thickness	±5%	±5%	ISO 10545-2
Straightness of Sides	±0.5%	±0.2%	ISO 10545-2
Rectangularity	±0.5%	±0.2%	ISO 10545-2
Surface Flatness	±0.5%	±0.3%	ISO 10545-2
Colour Difference	ΔE<1.00	ΔE<0.30	ISO 10545-16
Glossiness	As per Mfg.	>90%	Gloss Meter 60°
<b>Structural Properties</b>			
Water Absorption	≤0.5 %	≤0.3 %	ISO 10545-3
Apparent Density	As Per Mfg.	>2.20 g/cc	ISO 10545-3
<b>Massive Mechanical Properties</b>			
Modulus of Repture	Min.35N/mm <sup>2</sup>	Min.40N/mm <sup>2</sup>	ISO 10545-4
Breaking Strength	Min. 1300 N	Min. 2000 N	ISO 10545-4
Impact Resistance	As per Mfg.	Min. 0.55	ISO 10545-4
<b>Surface Mechanical Properties</b>			
Surface Abrasion Resistance	As per Mfg.	Min. class 3	ISO 10545-7
Moh's Hardness	As per Mfg.	Min. class 4	BS EN 15771
<b>Thermo Hygrometric Properties</b>			
Frost Resistance	As Per Mfg.	Frost Proof	ISO 10545-12
Thermal Shock Resistance	Min. 10 Cycle	Min. 10 Cycle	ISO 10545-9
Moisture Expansion	Max. 0.6mm/m	Max. 0.02mm/m	ISO 10545-10
Thermal Expansion	Max. 9.0 x 10 <sup>-6</sup>	Max. 6.0x10 <sup>-6</sup>	ISO 10545-8
<b>Chemical Properties</b>			
Chemical Resistance	As Per Mfg.	No Damage	ISO 10545-13
Stain Resistance	Resistant	Resistant	ISO 10545-14
<b>Safety Properties</b>			
Slip Resistance	As per Mfg.	N. A.	DIN 51130
Fire Resistance	As per Mfg.	Fire Proof	N. A.



# **Pavagadhi Ceramic**

**Jay Ambe Ceramic, 8-A National Highway, Morbi - 363642**

e-mail : [pavagadhiceramic@gmail.com](mailto:pavagadhiceramic@gmail.com)

[www.pavagadhiceramic.com](http://www.pavagadhiceramic.com)

**Mo. +91 99092 81254 / +91 93281 33207**

